



Brandeis

TRAVELERS

JUNE 30 - JULY 7, 2026

Featuring Faculty Leader
Colleen Hitchcock

GALAPAGOS ISLANDS

A LIVING LABORATORY OF NATURE'S DIVERSITY AND ENDLESS WONDERS

Dear Alumni and Friends,

Join Brandeis Travelers on an extraordinary voyage to the Galapagos Islands, home to a fascinating array of wildlife inhabiting an unspoiled ecosystem.

Begin in Quito with visits to Casa del Alabado Archaeological Museum, La Compañía de Jesús (the "Golden Church"), colorful San Francisco Plaza and Middle of the World City. Next, we'll embark the *Isabela II* cruise ship and sail through the archipelago with up-close access to endemic species. Experience encounters with endangered species that inhabit the waters and land of the archipelago. Discover the wonders of this national park, whale sanctuary, and marine reserve.

Walk among curious creatures on shore, snorkel beside sea lions and turtles in the clear waters of the world's second-largest marine reserve, and witness genuine interactions between species in the wild. Visit the Charles Darwin Research Station and the Giant Tortoise Breeding Center, where you'll encounter the magnificent and iconic Galapagos giant tortoise, a species that gives the islands their name. Explore all the Galapagos Islands has to offer with optional activities such as hiking, snorkeling, kayaking, panga rides, and glass-bottom boats.

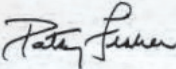
In partnership with local guides and experts, our tour will be led by Colleen Hitchcock, professor of ecology and chair of Brandeis' environmental studies program. Professor Hitchcock will enrich and inform the journey with her knowledge of biodiversity, ecology, and conservation biology.

Enjoy well-appointed accommodations aboard the *Isabela II*, a 40-guest vessel with spacious cabins, local cuisine, and onboard amenities. Sailing by small ship allows for flexibility in the itinerary to maximize wildlife viewing, as well as access to exclusive ports.

Join us for a uniquely Brandeis experience — one that offers stimulating conversation, camaraderie, and connection with other intellectually curious alumni and friends.

Inquire today as space is limited and this small-ship journey is expected to fill quickly. Reserve your space by calling our tour operator, Orbridge, at (866) 639-0079.

Sincerely,



F. Patricia Fisher
Vice President, Alumni Relations
Brandeis University

Featuring Faculty Leader Colleen Hitchcock



Colleen Hitchcock is professor of ecology in the biology department and chair of Brandeis' environmental studies program. Professor Hitchcock teaches courses in conservation biology, ecology, the biology of climate change, and participatory science. She is interested in the role of participatory science in ecological inquiry and conservation biology relevant to studies of biodiversity, conservation, phenology, and climate change. Hitchcock has been recognized with the Louis Dembitz Brandeis Prize for Excellence in Teaching (May 2024) and the Global Challenges Teaching Award: Climate Change from the U.S.-UK Fulbright Association (August 2024). She holds a PhD in ecology, evolution, and biodiversity Studies from the University of Pennsylvania and a BS from Boston College.

Galapagos Islands | Itinerary Highlights (subject to change)

Day 1 **EN ROUTE FROM U.S. | ARRIVE IN QUITO, ECUADOR** After an evening arrival in Quito transfer to your five-star boutique hotel—the only Relais & Châteaux property in Quito—for a restful night's sleep.
Overnight: Casa Gangotena

Day 2 **QUITO** Join a local guide for a full-day tour of Quito. *(Itinerary sequence may vary.)* Visit the Casa del Alabado Archaeological Museum to view its collection of pre-Columbian art. Admire La Compañía de Jesús during an inside tour. Delight your senses at the vibrant San Francisco Plaza. Stop by a chocolatier to learn how cacao beans are processed followed by a tasting of premium Ecuadorian chocolates. See Independence Square, the heart of Quito's urban planning and a vibrant center of Ecuadorian life. Journey just north of Quito to the Middle of the World City. In the 18th century, the French Geodesic Mission conducted groundbreaking measurements at this site to determine the shape of the Earth and pinpoint the location of the equatorial line. Take an inside tour of Casa del Higo, a historical house built in 1650 showcasing a rich history of architectural techniques applied throughout history. This evening become acquainted with fellow travelers during a welcome reception and orientation.
Overnight: Casa Gangotena (B,L,R)

Day 3 **QUITO | FLIGHT TO BALTRA | SANTA CRUZ: HIGHLANDS | PUERTO AYORA – EMBARKATION** This morning transfer to Mariscal Sucre International Airport for the approximate two-hour flight to Baltra Airport. Upon arrival transfer to the Baltra Ferry Terminal to ferry to Santa Cruz Island. A short, scenic drive brings you to the Highlands for lunch. Afterward prepare to encounter the magnificent and iconic Galapagos giant tortoise. Your naturalist guide will describe the tortoises habits and habitat, as well as the ongoing conservation efforts surrounding this astonishing reptile. Later during embarkation take time to unpack and become familiar with your stateroom and the ship's welcoming public spaces. This evening gather for a cocktail before dinner.
Overnight: *Isabela II* (B,L,D)

Day 4 **BARTOLOMÉ | SANTIAGO: SULLIVAN BAY** See Bartolomé and its spectacular beach. If desired, climb the wooden staircase (less than a half-mile distance) to reach the summit for expansive panoramic views of the Galapagos. Set out on a panga boat for a cruise around Pinnacle Rock, formed of limestone created by the accumulation of small volcanic elements. This active spot is home to playful Galapagos penguins. After lunch explore Sullivan Bay, renowned for its otherworldly volcanic landscape. Back on board the ship embrace valuable leisure time to rejuvenate between adventures.
Overnight: *Isabela II* (B,L,D)

Day 5 **SANTA CRUZ: DRAGON HILL | SANTIAGO: BUCCANEER COVE** Enjoy leisure time to stroll Dragon Hill's shoreline or snorkel with hopes of spotting rays and green turtles. Cruise the coastline beside the impressive cliffs of Buccaneer Cove and hear about the pirates, privateers and whalers who set anchor here during the 17th and 18th centuries.
Overnight: *Isabela II* (B,L,D)

Day 6 **ISABELA: PUNTA VICENTE ROCA | FERNANDINA: PUNTA ESPINOZA** Explore the captivating coast of Isabela by watercraft looking for wildlife. Conclude at Fernandina, the youngest island of the archipelago and arguably one of the most pristine ecosystems on the planet. Spot for hawks, marine iguanas and the famous flightless cormorant.
Overnight: *Isabela II* (B,L,D)

Day 7 **BALTRA – DISEMBARKATION | FLIGHT TO QUITO, ECUADOR** Bid a fond adiós to the crew prior to departing Baltra for Quito where you will spend your final night. *(Returning flights to the U.S. may begin departing late evening on Day 7 approximately around 9:00 pm and later.)*
Overnight: Wyndham Quito Airport (B,L)

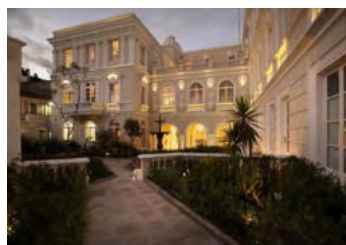
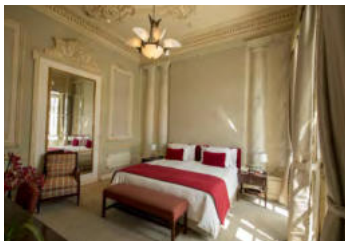
Day 8 **QUITO | DEPART FOR U.S.** After breakfast main program guests departing during the suggested times take a complimentary transfer to the airport for flights home. If post-tour guests did not depart on Day 7, they will depart Quito for flights to Cusco, Peru, this morning. (B)

(B = Breakfast, L = Lunch, D = Dinner, R = Reception)

Hotel Accommodations *(subject to change)*

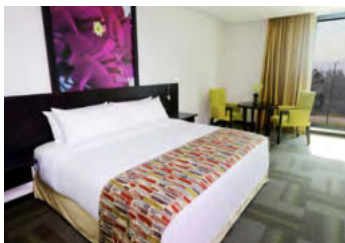
CASA GANGOTENA – QUITO

Five-star Casa Gangotena is located across from Plaza San Francisco in the heart of Quito's Spanish Colonial Old Town. The hotel offers easy access to the rich culture, tradition, and charm of the city's historic center—a UNESCO World Heritage Site since 1978. Embrace the property's well-adorned interior featuring Art Nouveau and Art Deco elements dating back to the mid-1920s. During leisure time stroll the gardens, enjoy tea on the patio or relax on the rooftop terrace while admiring the spectacular sweeping views of Quito's historic district.



WYNDHAM QUITO AIRPORT HOTEL

Conveniently located near the Mariscal Sucre International Airport, the Wyndham Quito Airport Hotel offers comfortable and convenient accommodations for the last night of the program.



Orbridge Standard of Excellence

Orbridge understands travel today can be complicated. From cabin or room selection to airport transfers, dietary requests, or pre- or post-tour details—we are dedicated to making your journey seamless and special from the moment you leave home.

Our curated destinations—featuring outstanding properties and ships, meticulously crafted itineraries, and knowledgeable guides, travel directors and expedition leaders—offer life-changing experiences you'll never forget.

Our Guest Services team is staffed by well-traveled professionals who provide personalized attention, ensuring all your questions are answered and all the details of your trip are explained to you.

Our air partners can make flight arrangements for guests. In the event of flight delays and/or schedule changes, they will provide guests with personalized assistance. To book flight reservations with our air partners, contact (206) 319-5011 and select the option for your destination to discuss flight details with our air colleagues. Upon ticketing, a fee will be charged.



Optional Pre-Tour Mashpi Lodge

Immerse yourself in the unparalleled natural beauty and exclusivity of Mashpi Lodge. Delve into the ecological wonders of the rainforest through interactive workshops, enriching nature activities and expert-led discussions that provide valuable insights into the region's unique flora and fauna.

Day +1 **ARRIVE IN QUITO, ECUADOR** Transfer to your hotel to refresh for tomorrow's full day of activities.
Overnight: Casa Gangotena

Day +2 **QUITO | MASHPI LODGE | MASHPI RESERVE** After breakfast journey 3.5 hours, arriving at award-winning Mashpi Lodge. Settle into your elegantly appointed room, featuring locally-inspired décor. Floor-to-ceiling windows offer breathtaking views of the surrounding greenery, creating an enchanting ambiance amidst the tranquility of your room. Enjoy lunch, then choose from several optional activities. Take a guided hike to one of several waterfalls or follow the Howler Monkey Trail to the Life Centre, which provides extensive information about the rainforest's incredible biodiversity. Return to the lodge to rejuvenate among the property's five-star amenities. Take a leisurely dip in the open-air rooftop hot tub, or visit the spa for a luxurious treatment (*additional fee applies*) complemented by the soothing sounds of the rainforest.
Overnight: Mashpi Lodge (B,L,D)

Day +3 **MASHPI LODGE | MASHPI FOREST CANOPY EXPLORATION** Today get a birds-eye view of the Mashpi Forest canopy during a guided ride aboard the *Dragonfly*—an aerial cable car. Go for the entire two-hour ride, or combine the *Dragonfly* experience with a guided nature or waterfall hike. This evening, join fellow travel companions to hear a collection of lectures by a resident biologist or naturalist.
Overnight: Mashpi Lodge (B,L,D)

Day +4 **MASHPI | QUITO | MAIN PROGRAM BEGINS** After breakfast and final activities at the lodge take a group transfer to Quito for lunch before joining the group for the main program. (B,L)

What's Included

- 1 night at Casa Gangotena in Quito
- 2 nights at award-winning Mashpi Lodge
- 3 breakfasts, 3 lunches and 2 dinners (soft drinks available at all meals)
- Entrance to Mashpi Reserve
- *Dragonfly* aerial tram experience
- Full guiding services including interpretation on all activities and experiences within the reserve
- Specialized lectures and field presentations on research conducted in the reserve by local experts
- Use of rain gear (waterproof poncho, rubber boots), walking sticks, spotting scopes and binoculars
- All transportation for excursions using vehicle transport in the reserve
- All gratuities and portorage
- Airport transfers for guests arriving during the suggested times
- Round-trip group transportation between Quito and Mashpi Lodge





Optional Post-Tour Machu Picchu and the Sacred Valley

Travel to the mist-shrouded mountain citadel of the Incas. Explore the Sacred Valley of the Incas, ride the train through the Urubamba Valley, and break bread in the home of a local Peruvian family.

Day 8 **QUITO | FLIGHT TO CUSCO | SACRED VALLEY**
Fly over the Central Andes' peaks and plateaus to the ancient capital of Cusco, Peru. Meet your guide and transfer to the Sacred Valley. Enjoy a light lunch before visiting the Yucay Museum of Living Culture for a guided visit. The evening is at leisure.
Overnight: Sonesta Posadas del Inca – Yucay (L)

Day 9 **SACRED VALLEY | MACHU PICCHU** Journey to the rail station to board the *Vistadome* train to Aguas Calientes, a gateway to the Inca ruins of Machu Picchu. Disembark the train for a bus ride up the mountain. Join a guide to explore ruins of the lower citadel. Learn about the archaeology and history of Intihuatana (the Sun Dial), the Sacred Plaza, and the Temple of the Sun, with plenty of time to wander, hike and take pictures of the photogenic site. Return to the village at the base of the mountain and then the hotel for free time before dinner.
Overnight: Inkaterra Machu Picchu Pueblo Hotel (B,D)

Day 10 **MACHU PICCHU** Experience a quiet morning at Machu Picchu with exploration from the upper citadel. This afternoon visit Aguas Calientes with time to explore independently.
Overnight: Inkaterra Machu Picchu Pueblo Hotel (B,D)

Day 11 **CUSCO | FLIGHT TO LIMA | DEPART FOR U.S.**
Return to Ollantaytambo aboard the *Expedition* train. Next visit a private home for lunch followed by a traditional Pachamama ceremony and Archaeo-Music performance. Transfer to the airport for an afternoon flight to Lima. An Orbridge representative will assist with connections to tonight's international flights. A group day room will be provided for comfort between flights.
Day Room: Wyndham Grand Costa del Sol (B,L)

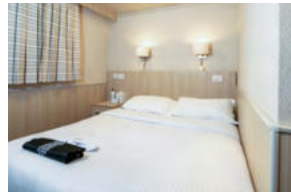
What's Included

- Airfare from Quito to Lima and round-trip internal airfare between Lima and Cusco (including luggage fees and preferred boarding/seating)
- 3 nights premium accommodations and a group day room on departure day
- 3 breakfasts, 2 lunches and 2 dinners
- Fully guided tours and field presentations from local experts
- All ground excursion transportation including the *Vistadome* and *Expedition* trains through the Urubamba Valley
- Luggage portage
- Gratuities to guides, drivers and wait staff for included meals
- Airport assistance for guests arriving and departing during the suggested times



Onboard *Isabela II*

Accommodating only 40 guests, the 183-foot *Isabela II* was designed to provide the ultimate in comfort and adventure while cruising the Galapagos Islands. Guests can savor fresh, delicious international and Ecuadorian cuisine at every meal. Enjoy the spacious public decks, dining room, lounge, library, hot tub and fitness room.



Standard

Full-size bed, window, private bathroom with shower.
128 sq. ft.



Classic Twin

Two twin beds, view window, private bathroom with shower.
139 sq. ft.



Classic Double

Full-size bed, view window, daybed, private bathroom with shower.
139 sq. ft.

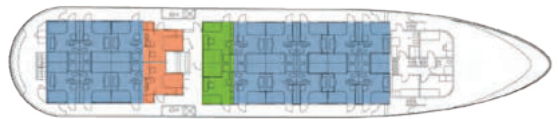


Premium Suite

Queen bed, view window, wardrobe, private bathroom with shower.
170 sq. ft.



Main deck



Cabin deck



JUNE 30 - JULY 7, 2026

Mashpi Lodge Pre-Tour: June 27-30, 2026

Machu Picchu Post-Tour: July 6-10, 2026

RESERVE YOUR SPACE TODAY

Online: alumni.brandeis.edu/travel

Phone: (866) 639-0079

Stateroom Category	Special Rate	Early Bird Rate*	Mashpi Lodge Pre-Tour	Standard Rate	Special Rate*
Standard	\$6,745	\$6,495	Double	\$2,499	\$2,295
Classic Double	\$7,745	\$7,495	Single	\$3,399	\$3,195
Classic Twin	\$8,145	\$7,895	Machu Picchu Post-Tour		
Premium Suite	\$10,245	\$9,995	Double	\$4,399	\$4,195
Single (Standard)	\$11,745	\$11,495	Double Deluxe	\$5,099	\$4,895
			Single	\$6,399	\$6,195
			Single Deluxe	\$7,199	\$6,995
			– rate includes round-trip internal airfare to/from Cusco –		
			Deluxe package includes room upgrades at Sonesta Posada del Inca and Inkaterra Machu Picchu Pueblo Hotel. Availability limited.		
			DEPOSIT AMOUNT PER PERSON		
			\$500 pre-tour • \$850 main tour • \$500 post-tour		

*Special group rates; limited offer. All rates are per person in U.S. dollars based on double occupancy except where noted as Single. Single availability limited. Unless noted otherwise, airfare is not included.

**An exclusive Early Booking Bonus, Expedition Libraries are curated collections of useful resources and background reading tailored to this program. Place your deposit on or before the specified date, and one Expedition Library per room will be sent after receipt of final payment. Libraries may be purchased; call for details. Full Terms & Conditions at terms.orbridge.com. Any payment to Orbridge, LLC constitutes your acceptance of the terms and conditions set out therein, including but not limited to the cancellation and refund terms.

CST#2098750-40 WST#602828994

Orbridge takes seriously the responsibility to minimize our global environmental impact. Each year we plant 100,000 trees in U.S. State Forests with afforestation needs as an ongoing initiative among our evolving sustainability efforts. Learn more at orbridge.com/going-green.



Brandeis Travelers
Institutional Advancement Division
Brandeis University, Mailstop 124
415 South Street
Waltham, MA 02454

GALAPAGOS ISLANDS

JUNE 30 - JULY 7, 2026

Early Bird Discount
rate of \$250 per person

30-DAY REFUND GUARANTEE

AN EXCLUSIVE EARLY
RESERVATION BONUS

Reserve your space by
April 3, 2026
to receive an additional \$250
per person off our Special Rate. **

PRSRT STD
U.S. POSTAGE
PAID
PERMIT NO. 825
SAN DIEGO, CA

Brandeis University is not responsible for any tour operator policies or for any refunds. Orbridge, LLC is the operator of this program and solely responsible for carrying out the responsibilities associated with it. Additionally, Brandeis University, as a sponsor, has no financial or legal responsibility for the program. For applicable Terms & Conditions associated with your participation in this program, please see terms.orbridge.com.

For information related to trip insurance, please contact Meyer and Associates at (800) 635-7801.